



**Holiday Inn**

AN IHG<sup>®</sup> HOTEL

LONDON – WEMBLEY



**Meetings  
& Events**

***Holiday Inn London - Wembley***

Holiday Inn London - Wembley has a range of meeting rooms to suit every need, no matter how individual your requirements.

Meeting Room	Total m <sup>2</sup>	Theatre	Classroom	Boardroom	U-Shape	Cabaret	Rounds	Round with dance floor	Cocktail	Air Con	Natural Daylight	Floor
Entire Empire Suite	800	700	300	150	170	360	550	500	700	Y	Y	Ground
Empire Suite 1	544	500	240	100	120	240	300	270	450	Y	Y	Ground
Empire Suite 2	175	100	50	30	40	70	90	60	100	Y	Y	Ground
Empire Suite 2 & Lobby	265	200	60	50	60	90	120	100	200	Y	Y	Ground
Empire Lobby	89	30	16	24	30	30	40	N/A	80	Y	Y	Ground
Wembley Suite	162	120	48	30	40	80	100	90	140	Y	Y	Mezz
Ascot Suite	97	80	32	24	24	40	70	50	100	Y	Y	Mezz
Wentworth Suite	81	65	28	24	20	40	60	40	80	Y	Y	Mezz
Henley Suite	38	30	16	12	14	15	30	N/A	30	Y	Y	Mezz

## Our meeting and conference facilities

Holiday Inn London - Wembley offers an unbeatable venue for meetings and conferences of all sizes. Our meeting space has all the essentials to make your event a success. Our seven fully air-conditioned meeting rooms, all with natural daylight, range from a small interview room to a large conference space for up to 700 delegates.

Everything has been designed with your business needs in mind to provide a relaxing and efficient working environment from free Wi-Fi to a dedicated Business Centre providing printing and copying facilities.

Our dedicated meetings & events team are there to take care of everything with you - from the moment you call to planning details to the day of your event.

### Our special meetings menu

Good food plays an important part in creating a successful event. Our healthy and well balanced menu offers a wide range to suit all tastes and special diets. Moreover, it has been specially designed to maintain high energy and attention levels.

## Our meetings promise

### Bookings Made Easy

Our flexible and experienced team is here to help, online and on the phone.

### Service Guarantee

We're committed to making your meeting a success, and getting things right first time.

### The Personal Touch

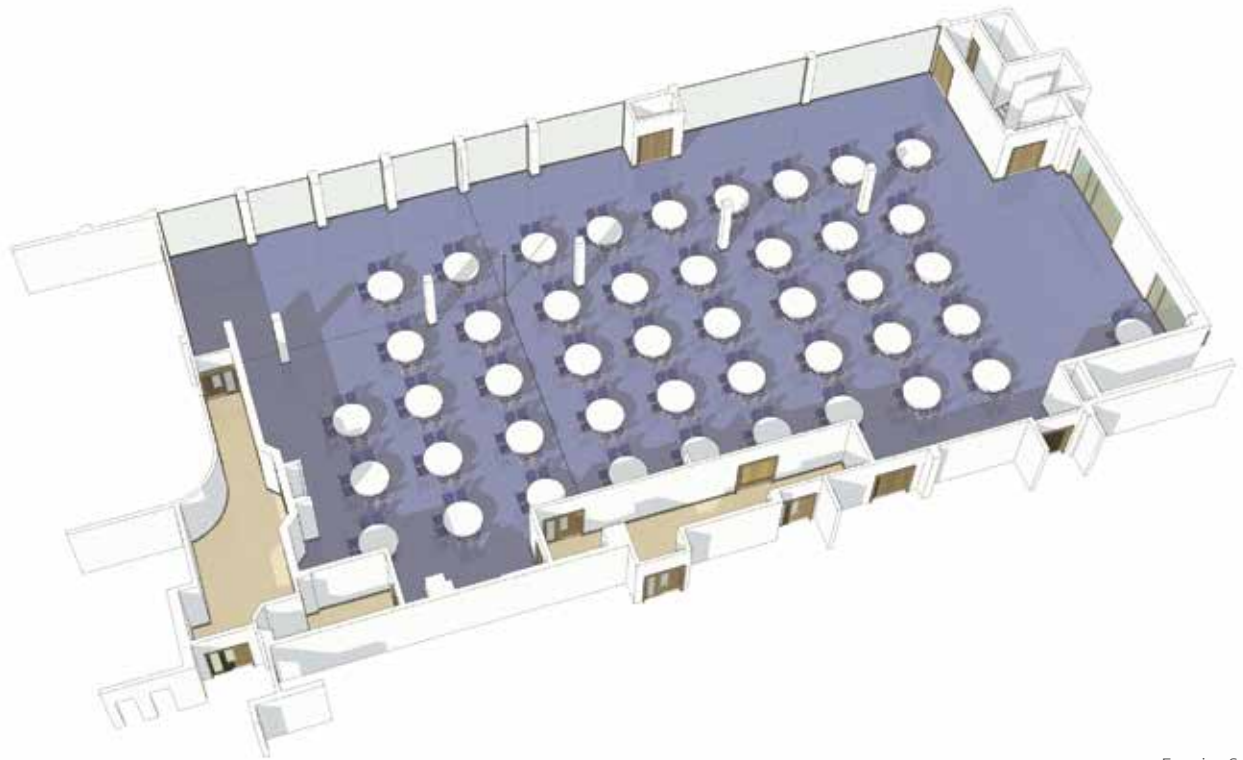
We'll take care of everything – from your initial contact and throughout your event, to saying goodbye. We'll be there to give you a helping hand.

### Your Meeting, Your Way

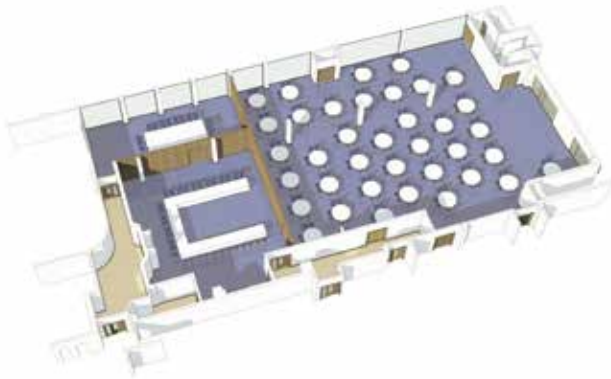
Original and uplifting catering choices to fuel your delegates plus we're always on hand to help with the technicalities and last minute requests.

### Meet Responsibly

Holiday Inn London - Wembley is a responsible company, working smarter for a green tomorrow.



Empire Suite



Empire1 and 2



Mezzanine





## At a glance

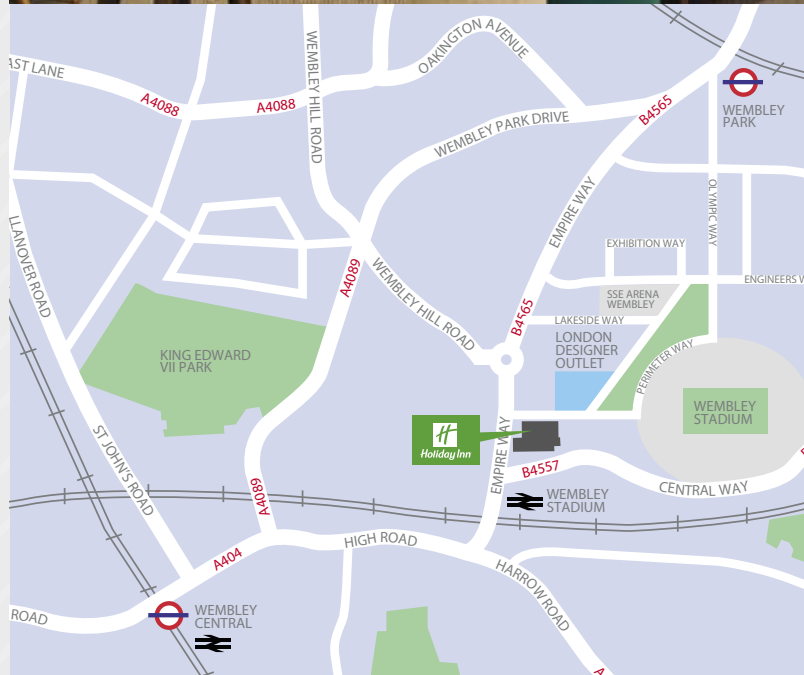
-  7 flexible meeting rooms
-  Capacity to accommodate up to 700 delegates
-  336 bedrooms
-  Complimentary Wi-Fi throughout the hotel
-  On-site parking for 250 vehicles
-  Open Lobby space
-  Ease of access to central London - 12 minutes by train

## Getting here

- We are based around 10 minutes' walk from Wembley Park Tube station, Wembley Central Tube station and Wembley Stadium (National Rail)
- King's Cross St Pancras Station – Wembley Park (Metropolitan Line) 21 mins
- Westminster – Wembley Park (Jubilee Line) 22 mins

### Traveling by car

- We have onsite parking for 250 cars, charged at £5 per day for conference guests\*
- We are within easy reach of the North Circular, M1, M4, M40, M25 and are based outside of the London Congestion Charge Zone
- Heathrow airport is 30 minutes away by car



“Thanks so much for working with me to make the event a success...Don't be surprised to see us again in two years time for the next one!”

— Roseline

Holiday Inn London - Wembley,  
Empire Way, Wembley, Middlesex, HA9 8DS  
T: 020 8902 8839  
E: [events@hiwembley.co.uk](mailto:events@hiwembley.co.uk)  
W: [hiwembley.co.uk](http://hiwembley.co.uk)

\*increased parking charge on Wembley event dates.

  
**Holiday Inn**  
AN IHG® HOTEL  
LONDON – WEMBLEY